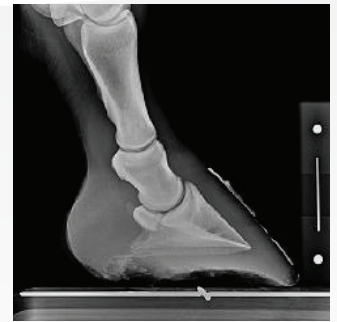


Tiger DR – CW Equine

Acquire | Store | View | Share

HD Wireless Detector for Veterinary Equine

Go Wireless 



High quality, simple, cost-effective CsI DR Wireless Solution

Maximum Waist-High Drop Protection*

Automatic Exposure Detection "AED"

Automatic Image Calibration for Precise Measurements

Foot Plate and Equine Blocks available

Rugged 17" Laptop w/TigerView DICOM Software
(Windows 10 Compatible)

*The Plate Encasement is engineered w/High Density Plastic providing excellent shear factor along with all radiuses/contoured edges. If it is accidentally dropped (average waist height) the combination of material selection and advanced engineering helps distribute the shear (impact).

The Plate is anti-scratch anodized aluminum enclosure with carbon fiber cover plate and anti-shock rubber edging. Reliable performance with water-proof (IP64) exterior casing for outdoor/field operation.



10x12 panel weighs only 5lbs.



Rapid 6-Second Processing



Highest pixel image quality



Compact, Durable Pelican Case



5 year warranty

Call us for an in-office demo today.

1-800-385-9593



Tiger DR – CW Equine

HD Wireless Detector for Veterinary Equine

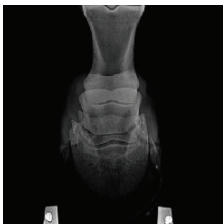
SPECIFICATIONS

Sensor	
Scintillator	Csl
Active Area	307 x 246 mm ²
Pixel Array	2560 x 2048
Pixel Pitch	120 μm
Image Quality	
Limiting Resolution	>4.2 lp
MTF	70% (@1 lp/mm) 40% (@2 lp/mm) 25% (@3 lp/mm) 15% (@4 lp/mm)
DQE (RQA5, 14μGy)	~70% (@0 lp/mm) ~33% (@3 lp/mm)
Sensitivity	~0.62ct/nGy
Response Non-linearity	< ±0.5%
Maximum Linear Dose	> 95μGy
Dark Noise	~ 10nGy
Dynamic Range	~ 82 dB
Communication Interface	
Image Acquisition Time	8 seconds
Exposure Control	F ² AED External Sync/Manual
Communication Interface	WiFi/Gigabit Ethernet

Environmental	
Operating	
Temperature Range	0 - 40°C
Humidity Range (non-condensing)	30% - 75% RH
Storage	
Temperature Range	-20°C - 55°C
Humidity Range	10% - 90% RH
Water / Dust Proof	IP64
Mechanical	
Dimensions	333 x 382 x 15 mm ²
Weight	~2.3 kg
Housing Material	Front: Carbon Fiber Back: Aluminum Alloy
Power	
Maximum Power	Standby: 8W Operating: 17W
AC Power	
Power Supply	100 - 240V AC
Frequency	50/50 Hz
Battery	3200 mAH, 14.7V

System Includes: 10" x 12" Flat Panel Detector and rugged Pelican carrying case, two (2) Battery Packs, Battery Charger, Equine Acquisition TigerView Software, 17" High-resolution Laptop w/3 year support, Five (5) Year Standard Parts Warranty, Training & Installation.

Optional Upgrades and Add-ons: Additional Battery Packs, 14" x 17" Wireless Flat Panel Detector.



For complete product information, visit televeresystems.com