

## Tiger DR HR DDS Sensor Vet



### High Resolution Intra-Oral CMOS Imaging Sensors



**Simple Workflow – Instant Image – Highest Image Quality**

#### Design and Innovation Excellence

Your successful veterinary practice deserves superior imaging equipment. The TigerDR ñ DDS Sensor Vet along with industry leading TigerView imaging software delivers the image quality that is expected by veterinary practitioners.

It is designed for exceptional diagnostic image quality. Detect pathologies under the gum that are not visible during routine exams without radiographs.

Ensure the best patient care as it improves office workflow. It is designed to reduce scatter and concentrate the energy to positively influence the best image quality and allow for faster transmission of high-resolution images.

TigerView imaging software is a complete image management system to acquire, store, view and share images. TigerView provides functionality that will significantly improve your work flow by providing better patient management and accurate diagnosis.



**2m Bend-Resistant Direct USB Cable**



**Instantaneous image acquisition time**



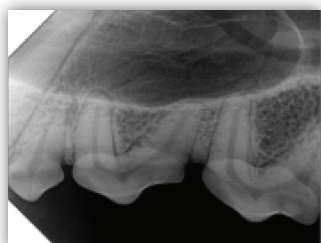
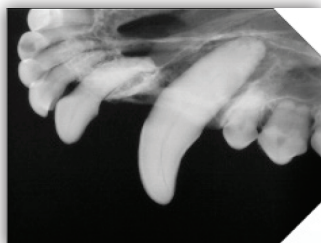
**Highest pixel image quality**



**Highest resolution at 20 LP/MM**



**3 year warranty**



Call us for an in-office demo today  
**1-800-385-9593**



2302 Beloit Avenue | Janesville, WI 53546 | p 800.385.9593  
[www.televeresystems.com](http://www.televeresystems.com)

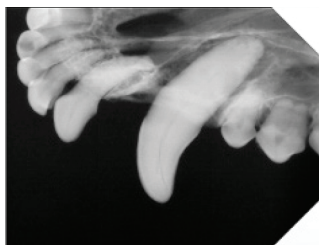
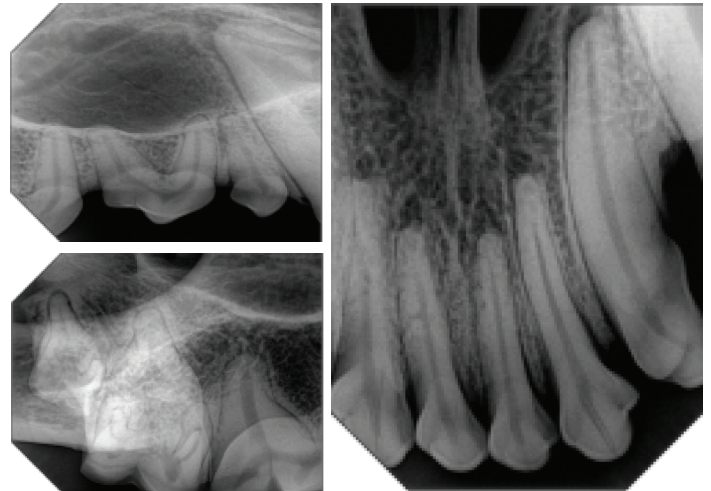
# Tiger DR - HR DDS Sensor Vet

## High Resolution Intra-Oral CMOS Imaging Sensors

### SPECIFICATIONS

| Sensor                          | S11684-12         | S11685-12         |
|---------------------------------|-------------------|-------------------|
| Scintillator                    | CsI (TI)          | CsI (TI)          |
| Images Size (H x V)             | 20 x 30 mm        | 26 x 34 mm        |
| Pixel Size                      | 20 x 20 $\mu$ m   | 20 x 20 $\mu$ m   |
| Pixel Pitch (H x V)             | 20                | 20                |
| Total Pixels (H x V)            | 1000 x 1506       | 1000 x 1706       |
| Total Effective Pixels          | 1000 x 1500       | 1000 x 1700       |
| Number of Light-Shielded Pixels |                   |                   |
| Upper Part                      | 766, 768, 770     | 756, 758, 760     |
| Lower Part                      | 1000 x 3          | 1000 x 3          |
| Image Quality                   | S11684-12         | S11685-12         |
| Resolution                      | 20 lp             | 20 lp             |
| Energy                          | S11684-12         | S11685-12         |
| Incident X-Ray Energy           | 20-90 kVp         | 20-90 kVp         |
| Total Irradiation Dose          | 57.6Gy            | 57.6Gy            |
| Sensitivity                     | ~19 LSB/ $\mu$ Gy | ~19 LSB/ $\mu$ Gy |
| Saturation Dose                 | ~260 $\mu$ Gy     | ~260 $\mu$ Gy     |
| Dynamic Range                   | 57 dB             | 57 dB             |
| Communication Interface         | S11684-12         | S11685-12         |
| Communication Interface         | USB 2.0           | USB 2.0           |

| Environmental                      | S11684-12    | S11685-12    |
|------------------------------------|--------------|--------------|
| Operating                          |              |              |
| Temperature Range                  | 0 - 35°C     |              |
| Humidity Range<br>(non-condensing) | 70% Max      |              |
| Storage                            |              |              |
| Temperature Range                  | -20°C - 70°C |              |
| Humidity Range                     | 70% Max      |              |
| Water / Dust Proof                 | IP67         |              |
| Mechanical                         | S11684-12    | S11685-12    |
| Dimensions (mm)                    | 39 x 25 x 12 | 42 x 30 x 13 |
| Weight                             | 56 g         | 60 g         |



Call us for an in-office demo today

**1-800-385-9593**

2302 Beloit Avenue | Janesville, WI 53546 | 800.385.9593

[www.televeresystems.com](http://www.televeresystems.com)

TV-DDSVET-01.12.21