



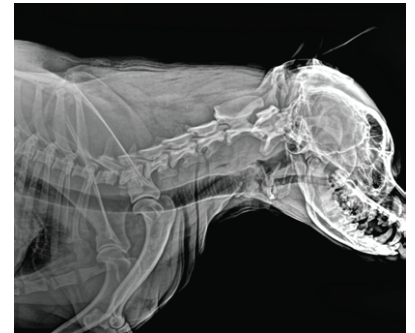
## Tiger DR-PW Veterinary

### Premium Gadox Wireless 12x12, 14x17 & 17x17 Digital Panels

Tiger DR-PW 12"x12", 14"x17" and 17"x17" are Premium Gadox cassette-size wireless flat panel detectors and do not require a cable connection with an X-ray generator to synchronize the signals. The panels fit into existing bucky trays and requires no rotation for full anatomic coverage. The Panels also have Auto Calibration Control, so your practice will not need a service engineer for periodic calibration or recalibration of the detector.

TigerView software complements the Vet Panels as a complete image management system to acquire, store, view and share images. TigerView provides functionality that will significantly improve your work flow by providing better patient management and accurate diagnosis. Quickly and easily access all digital image files and share them with colleagues and patients. Image enhancement and specialty specific measurement and annotation tools provide maximum information for minimum effort.

- *Fast image acquisition time*
- *Light and slim design*
- *Internal Image Storage*
- *Web Viewer - Direct image review from any mobile devices*
- *Long Battery life time*
- *4 Year Panel Warranty*
- *Direct to PC - Truly Wireless Setup*
- *TigerView software with Veterinary specific measurements*
- *Directly integrates with TigerView software.*



Call us for an in-office demo today  
**1-800-385-9593**



# Tiger DR-PW Veterinary

## Premium Gadox Wireless 12x12, 14x17 & 17x17 Digital Panels SPECIFICATIONS

Sensor	
Sensor	a-Si TFT Array
Conversion Screen	Csl: TI / Premium Gadox
Image Data	16bits
Limiting Resolution	3.5 lp/mm
12x12 Active Area	12 x 12 in (287x287mm)
14x17 Active Area	14 x 17 in (350x430 mm)
17x17 Active Area	17 x 17 in (430x430mm)
12x12 Sensor Pixel	2048 x 2048
14x17 Sensor Pixel	2560 x 3072
17x17 Sensor Pixel	3072 x 3072
Image Quality	
Data Transfer Time	Less than 1 second
12x12 Internal Storage	Up to 200
14x17 Internal Storage	Up to 150
17x17 Internal Storage	Up to 150
Communication Interface	
Image Acquisition Time	3-5 sec. (approx)
Data Transfer Time	Less than 1 second
Trigger Mode	AED (Auto Exposure Detection), Manual Trigger
Calibration Mode	ACC (Auto Calibration Control), Manual Calibration
Image Transmission	Gigabit Wi-Fi IEEE 802.11

Environmental	
Operating	
Temperature Range	10 - 35°C
Humidity Range (non-condensing)	20% - 75% RH
Storage	
Temperature Range	-10°C - 60°C
Humidity Range	10% - 90% RH
Mechanical	
12x12 Dimensions	308.5 x 319.5 x 15mm
14x17 Dimensions	385 x 460 x 15mm
17x17 Dimensions	460 x 461 x 15mm
12x12 Weight	4.4 lbs w/battery
14x17 Weight	6 lbs w/battery
17x17 Weight	7 lbs
Power	
Battery Performance	10 hours
AC Power	
Power Supply	100 - 240V AC
Frequency	50/60 Hz



Call us for an in-office demo today  
**1-800-385-9593**

2302 Beloit Avenue | Janesville, WI 53546 | 800.385.9593

[www.televeresystems.com](http://www.televeresystems.com)

TV-DRGADOXVET-01.12.21