

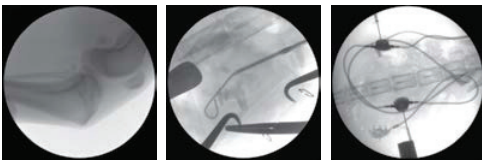
Skanc - Vet



High Frequency Mobile Surgical C-Arm

The Skanc - Vet is designed with the following features:

- High-Frequency 3.5kW generator technology with switching range from 80-250 kHz
- Lowest Leakage Radiation
- 2.2kW (110VAC) / 3.5kW (220VAC-240VAC), 80-250kHz dual processor mono-block generator with proprietary radiation shielding technology
- Image capture with 1k x 1k resolution for exceptional image quality
- 10.4" TFT LCD Touch console with optical encoder and hot keys for easy operation
- Laser Aimer & Virtual Collimation for exposure-less alignment of Region of Interest
- DICOM 3 support & storage of over 100,000 images as standard
- kVp range: 40-110, mA range: 0.2-12
- Pulse Fluoroscopy mode up to 12mA
- Fluoro up to 8mA, Burst fluoro up to 30 frames



Touch Screen Console

- 10.4" TFT LCD display with 230 cd/m Brightness
- Anti-glare SVGA 800(H)x600(V) resolution display
- Supports optical encoder and hot keys for ease of operation
- Laser aimer control
- Menu driven user friendly operation



Call us for an in-office demo today
1-800-385-9593



Skan C - Vet

High Frequency Mobile Surgical C-Arm

SPECIFICATIONS

X-Ray Tube Type	Fixed Anode
Nominal Focal Spot Value	0.6/1.8 as per IEC60336
Maximum Anode Heat Capacity	56kHU
Maximum Housing Heat Capacity	1150kHU
Total Filtration	>0.1 inch (2.5mm) of Al eq.
Mode of Operation	Fluoroscopy, Radiology
Maximum Output in Large Focus	[2.2kW (110V) / 3.5kW (220-240V)] for 100mS
Maximum Continuous Output in Small Focus	500W [10mins]
kV Range	40-110kV
Maximum Tube Current (Large Focus)	70mA@50kV, 32mA@110kV [220-240VAC] 55mA@40kV, 20mA@110kV [110VAC]
Frequency	80-250kHz
mA Range for Continuous Fluoro	0.2 to 8mA
mA Range for Pulsed Fluoro	0.2 to 12mA
Digital Snap Shot	0.2 to 10mA
kV and mAs Range	40 to 110kV, [0.5 to 200mAs (110VAC) / 0.5 - 240mAs (220 - 240VAC)]
Collimation Types	Hard & Soft Shutters with Circular IRIS
Immersion Depth	26 inches
Clear Space (free space)	~30 inches
Vertical Travel	~18 inches
Horizontal Travel	~8 inches
Orbital Motion	-40 degrees to +90 degrees Max.

Other Features

- Small footprint
- Clean power from mains through UPF control
- Counter balanced C for ease of posturing and comfortable operation.
- Overscan / Underscan: -40°/+90°.
- Line Measurement to measure bones or screws during the surgery.
- Image Intensifier Magnification from 9, 6 and 4.5 inches can be achieved.
- Auto Technique for consistent image quality under varying anatomy densities.
- Images processing such as Zoom, flip, invert, torch and median.
- Image rotation on both active and passive monitors when offline.
- Snapshot feature produces Digital Radiography image quality in fluoro mode.
- Image Annotations feature to record and communicate the observations.
- Studies can be saved in MKV video, JPEG & DCM image Formats.
- Security Enabled for unintended user with Login Facility.
- DICOM 3 Compliant Image transfers to PACS / Printer.
- Manual and Auto-save option for images and video.
- Manual APF table and APR to select kVp and mA.



Call us for an in-office demo today
1-800-385-9593

2302 Beloit Avenue | Janesville, WI 53546 | 800.385.9593

www.televeresystems.com

TV-VET-SKANC-01.26.22