

Tiger Handheld Portable X-Ray - Human Dental



Battery Powered Handheld Portable X-Ray

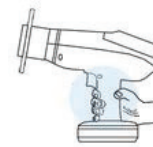
The Cocoon has enough power and handy weight to be used for both general treatment and operation. When mobility is needed most frequently, x-rays are important as a progress check in many dental surgical operations. Moving a patient under anesthesia for a wall-mounted x-ray is not only inconvenient and time-consuming for the doctor, but risky for the patient. The Cocoon portable handheld x-ray device allows for true one-hand portable x-ray shots: as many as 600 shots before recharging. It is more efficient for dentists and oral surgeons, and the operator is also protected by advanced safety features.

ADVANCED RADIATION SAFETY

- Significantly lower radiation doses (1/7) compared to wallmounted X-ray systems
- Internal multiple lead wrapping guarantees almost zero radiation leakage
- External back scatter shield ensures safety by protecting against radiation exposure
- Trigger Safety and Screen Lock mechanisms prevent unintended exposure
- Neck strap feature prevents accidental device drops, ensuring safety and reliability

CREATIVE DESIGN

- Lightweight and compact design for easy handling and portability
- Convenient gun grip type trigger for comfortable and effortless operation



AIMING OUTPUT

- Cocoon's aiming light ensures pinpoint accuracy in X-ray imaging. This groundbreaking feature aids medical professionals in precisely targeting regions for radiographic imaging, enhancing patient diagnoses and various medical procedures, including surgeries.



VOICE PROMPTED USER GUIDE

- Voice-prompted quick user guide provided for Cocoon
- Offers concise and instructive assistance on device operation
- Intuitive feature designed for seamless user experience
- Empowers users to efficiently navigate device functionalities
- Aids in maximizing user proficiency with the technology

BATTERY

- Lithium polymer battery offers rapid charging capabilities
- Requires only one hour to achieve full battery capacity
- Capable of capturing 600 shots per fully charged battery, ensuring prolonged usage

INTUITIVE UI

- User Interface automatically changes exposure time based on region being imaged
- On the device's UI, users can select their desired X-ray detector type for image rendering



Call us for an in-office demo today
1-800-385-9593



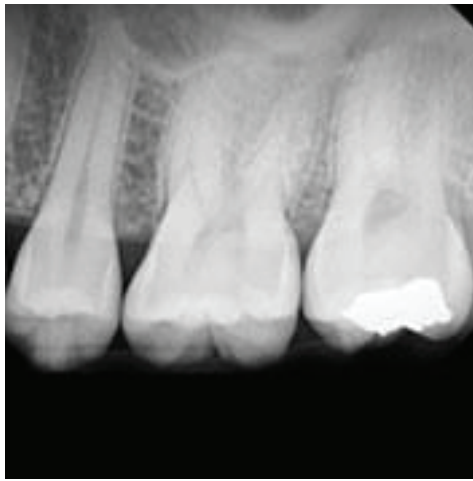
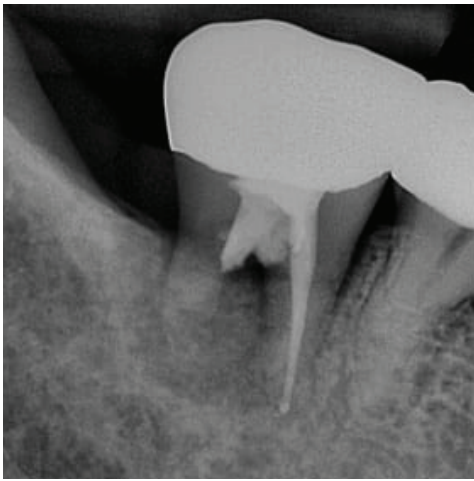
Tiger Handheld Portable X-Ray - Human Dental

Battery Powered Handheld Portable X-Ray

Specifications

Tube Voltage	70 kV Fixed
Tube Current	2 mA Fixed
Tube Focal Spot Size	0.4 mm
Power Consumption	336 VA, 321 VA
Cooling Method	Oil Cooling Method
Total Filtration Inherent Filtrations	Over 2.3 mm Al 1.0 mm Al
Target Angle	12.5°

Exposure Time Range	0.05 - 1.0 sec
Exposure Time Interval between the exposure	0.01 sec
Distance to Target	2 inches
Battery	16.8 V
Battery exposure capacity	600 Shots with full charge
Body Dimensions	322 x 134 x 262 mm
Body Weight	4.9 lb



Call us for an in-office demo today
1-800-385-9593

2302 Beloit Avenue | Janesville, WI 53546 | 800.385.9593

www.televeresystems.com

TV-CocoonHDental-12.19.23